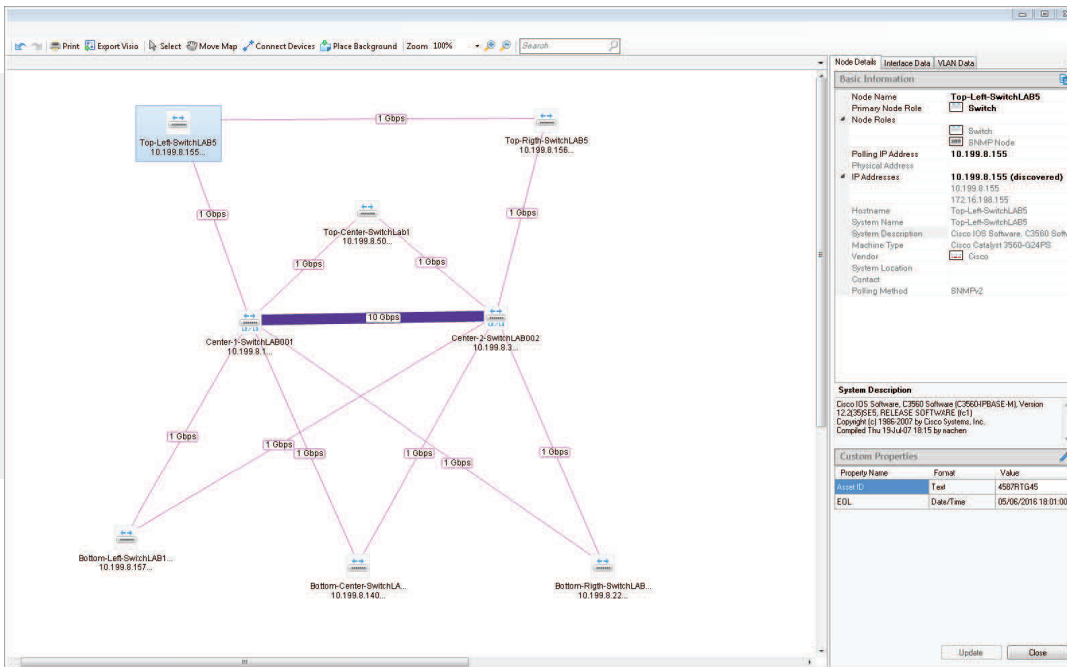


Network Topology Mapper

Map Your Network Automatically



Finally, you can put down your whiteboard markers and relax while SolarWinds® Network Topology Mapper (NTM) does the network mapping for you. Leveraging a unique multi-layer discovery technique, Network Topology Mapper automatically discovers your LAN or WAN and produces comprehensive, easy-to-view network diagrams that integrate OSI Layer 2 and Layer 3 topology data (including switch-to-switch, switch-to-node, and switch-to-router port connections). With two mouse clicks, this data can be exported into Microsoft Office® Visio® and easily shared with your colleagues.

WHY CHOOSE NETWORK TOPOLOGY MAPPER?

- » NTM automatically maps your network, giving your team clear network topology visibility
- » When making changes to your network, NTM auto-detects all updates, helping to save you time and resources
- » NTM allows you to create multiple maps from a single scan, and supports multiple discovery methods including SNMP v1-v3, ICMP, WMI, CDP, VMware®, Hyper-V®, and more
- » NTM allows you to export maps to Microsoft Visio, PDF, and PNG formats
- » NTM addresses reporting needs for PCI compliance, FIPS 140-2, and other regulatory requirements

FEATURES

Auto-Discovery & Detailed Map Creation

Network Topology Mapper automatically discovers your entire network. After the initial scan, comprehensive and detailed network maps are created typically in just minutes. You can also edit node details of map objects and connect network devices manually.

Export Maps to Common Formats

Network Topology Mapper exports network maps to Microsoft Office Visio, PDF, and PNG formats, and also schedules updated map export to Orion[®] Network Atlas.

Network Regulatory Compliance

Network Topology Mapper allows you to directly address PCI compliance and other regulations that require maintenance of an up-to-date network diagram. Network Topology Mapper is also FIPS 140-2 compliant.

Multi-Level Network Discovery

Network Topology Mapper performs multi-level discovery to produce an integrated OSI Layer 2 and Layer 3 network map that includes detailed device information.

Auto-Detect Changes to Network Topology

Network Topology Mapper automatically detects new devices and changes to network topology with scheduled network scanning.

Manage Network Inventory

Network Topology Mapper lets you perform inventory management of hardware assets and automate report creation.

Generate Inventory and Network Reports

Network Topology Mapper's robust reporting tools help you keep track of inventory and network information.

SYSTEM REQUIREMENTS

HARDWARE	MINIMUM REQUIREMENTS
CPU	2.66 Ghz processor
Memory	500 MB RAM
Hard Drive	10 GB free disk space is recommended
SOFTWARE	MINIMUM REQUIREMENTS
OS	Windows® 10, 8.1, 8, and 7 desktop OS and Windows Server® 2003-2016
.Net Framework	3.5 or later

TRY BEFORE YOU BUY. DOWNLOAD A FREE TRIAL!

At SolarWinds, we believe you should try our network topology mapping software before you buy. That’s why we offer free trials that deliver full product functionality. Simply download and install the software. That means no complex service agreements. No professional services. No confusing pricing structures. No set-up charges. Download your free, fully functional trial today!

ABOUT SOLARWINDS

SolarWinds provides powerful and affordable IT management software to customers worldwide, from Fortune 500® enterprises to small businesses, managed service providers (MSPs), government agencies, and educational institutions. We are committed to focusing exclusively on IT, MSP, and DevOps professionals, and strive to eliminate the complexity that our customers have been forced to accept from traditional enterprise software vendors. Regardless of where the IT asset or user sits, SolarWinds delivers products that are easy to find, buy, use, maintain, and scale while providing the power to address key areas of the infrastructure from on-premises to the cloud. This focus and commitment to excellence in end-to-end hybrid IT performance management has established SolarWinds as the worldwide leader in both network management software and MSP solutions, and is driving similar growth across the full spectrum of IT management software. Our solutions are rooted in our deep connection to our user base, which interacts in our THWACK® on-line community to solve problems, share technology and best practices, and directly participate in our product development process. Learn more today at www.solarwinds.com.

ABOUT SOLARWINDS

SolarWinds (NYSE:SWI) is a leading provider of simple, powerful, and secure IT management software. Our solutions give organizations worldwide—regardless of type, size, or complexity—the power to accelerate business transformation in today’s hybrid IT environments. We continuously engage with technology professionals— IT service and operations professionals, DevOps and SecOps professionals, and Database Administrators (DBAs) – to understand the challenges they face in maintaining high-performing and highly available IT infrastructures, applications, and environments. The insights we gain from them, in places like our **THWACK** community, allow us to address customers’ needs now, and in the future. Our focus on the user and commitment to excellence in end-to-end hybrid IT management has established SolarWinds as a worldwide leader in solutions for observability, IT service management, application performance, and database management. Learn more today at www.solarwinds.com.

TRY IT FREE

30 days, full version

ABOUT LOOP1

Loop1 is a leading global IT Operations Management (ITOM) company specializing in the SolarWinds ITOM product offerings—we offer the most comprehensive training and professional services for SolarWinds clients across the globe. Headquartered in Austin, TX, United States, with offices in the United Kingdom, Ireland, Germany, Sri Lanka, and Singapore, the group has more than 100 employees across four continents, clients in more than 60 countries, and 25+ SolarWinds Certified Professional (SCP) engineers, holding 130+ individual certifications.



A SOLARWINDS ELITE PARTNER

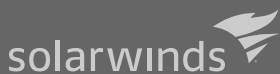
CONTACT US

US +1 (877) 591-1110

UK +44 (0)1285 647900

IRE +353 (0)21 601 7548

www.loop1.com | info@loop1.com



For additional information, please contact SolarWinds at 866.530.8100 or email sales@solarwinds.com.

To locate an international reseller near you, visit http://www.solarwinds.com/partners/reseller_locator.aspx

© 2019 SolarWinds Worldwide, LLC. All rights reserved

The SolarWinds, SolarWinds & Design, Orion, and THWACK trademarks are the exclusive property of SolarWinds Worldwide, LLC or its affiliates, are registered with the U.S. Patent and Trademark Office, and may be registered or pending registration in other countries. All other SolarWinds trademarks, service marks, and logos may be common law marks or are registered or pending registration. All other trademarks mentioned herein are used for identification purposes only and are trademarks of (and may be registered trademarks) of their respective companies.

This document may not be reproduced by any means nor modified, decompiled, disassembled, published or distributed, in whole or in part, or translated to any electronic medium or other means without the prior written consent of SolarWinds. All right, title, and interest in and to the software, services, and documentation are and shall remain the exclusive property of SolarWinds, its affiliates, and/or its respective licensors.

SOLARWINDS DISCLAIMS ALL WARRANTIES, CONDITIONS, OR OTHER TERMS, EXPRESS OR IMPLIED, STATUTORY OR OTHERWISE, ON THE DOCUMENTATION, INCLUDING WITHOUT LIMITATION NONINFRINGEMENT, ACCURACY, COMPLETENESS, OR USEFULNESS OF ANY INFORMATION CONTAINED HEREIN. IN NO EVENT SHALL SOLARWINDS, ITS SUPPLIERS, NOR ITS LICENSORS BE LIABLE FOR ANY DAMAGES, WHETHER ARISING IN TORT, CONTRACT OR ANY OTHER LEGAL THEORY, EVEN IF SOLARWINDS HAS BEEN ADVISED OF THE POSSIBILITY OF SUCH DAMAGES.